

Production Worksheet

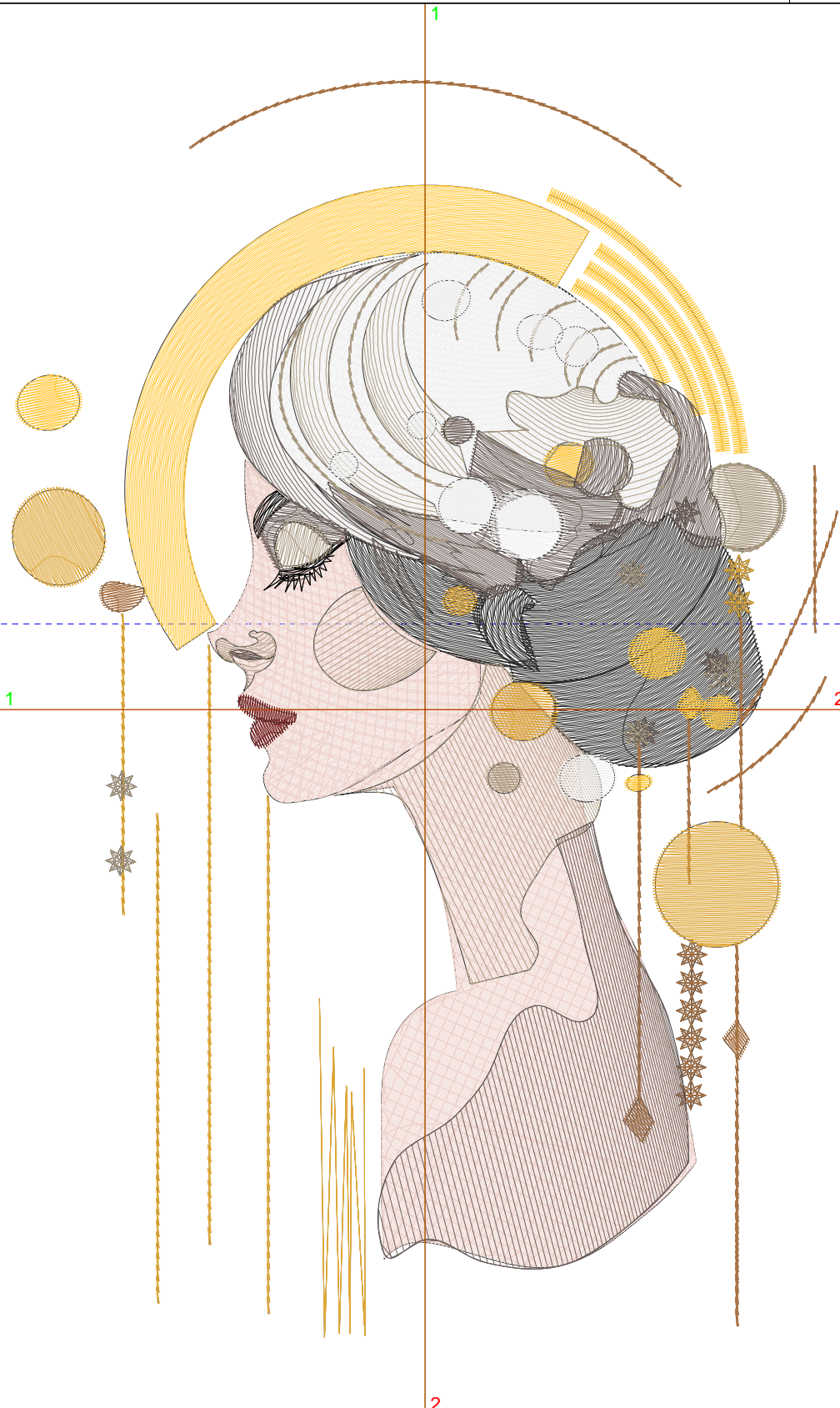
Wilcom EmbroideryStudio - Designing

Design: **BFC31990-01**

Title:

Stitches: 27,994
 Height: 6.91 in
 Width: 4.54 in
 Colors: 10
 Colorway: Colorway 1
 Zoom: 1.14

BFC Creations



Machine format: Tajima
 Color changes: 11
 Stops: 12
 Trims: 62
 Left: 57.7 mm
 Right: 57.6 mm
 Up: 87.8 mm
 Down: 87.6 mm
 Area: 31.36 in²
 Thread chart: BFC Poly
 Total bobbin: 194.74ft

Stop Sequence:

#	Color	Code	Name
1.	Light Peach	2250	PLST Peach
2.	White	2169	Bright White
3.	Dark Gray	2926	DKST Green Gray
4.	Brown	2758	MD Rust
5.	Black	2170	Black
6.	Dark Red	2567	DK Brick
7.	Taupe	2748	Taupe
8.	Yellow	2832	Golden Amber
9.	Gold	2834	Harvest Gold
10.	Dark Gray	2818	DKST Mink
11.	Taupe	2748	Taupe
12.	White	2169	Bright White

Thread usage: 512.30ft

N#	Color	Name	Length
2.	2250	PLST Peach	159.76ft
9.	2169	Bright White	125.56ft
7.	2926	DKST Green Gray	40.55ft
10.	2758	MD Rust	17.42ft
11.	2170	Black	2.08ft
12.	2567	DK Brick	1.71ft
5.	2748	Taupe	35.02ft
3.	2832	Golden Amber	46.51ft
4.	2834	Harvest Gold	36.21ft
6.	2818	DKST Mink	47.48ft